

The new prison at Glen Parva project newsletter – February 2021



Project Director's Update

I am pleased to write to you again with a further update on the construction progress at the new prison site. We have had a battle with the elements facing wet, snowy and icy conditions since our return in the new year. However, we have managed through these natural challenges and continued working with the piling and earthworks, which are progressing well.

The ground floor slabs are now advanced to allow us to commence with the precast concrete walls which will take us to the next stage – which we call vertical build. We have been working hard to ensure we don't disturb you, I hope you agree we have achieved this whilst carrying out this important work?

I am really pleased to announce that we have registered this site with the Considerate Constructors Scheme, which Lendlease are very proud to be affiliated with. The scheme helps share best practice and maintain high quality standards for our employees and the local community.

One of the many key performance indicators (KPIs) that we are monitoring, alongside the Ministry of Justice (MoJ) is the local spend within a 50 mile radius of the site, which I am pleased to confirm is exceeding our expectations at just over £14 million since the project began.

I am hopeful that once we have concluded work on our office accommodation and COVID restrictions allowing, that we can meet with residents face to face on site, to host an open evening alongside our Ministry of Justice colleagues.

I hope you are all managing to keep well and stay safe.
Best Wishes,
Steve

Keeping you informed

The Lendlease team would like to continue keeping in touch with the local residents through newsletters and meetings to keep you updated on the progress on-site.

Please email GlenParva@lendlease.com if you would like to contact us with any questions or feedback about the project.

Want to work on site?

Lendlease is working with local partners and stakeholders to promote the employment, apprenticeship and training opportunities created by the new prison at Glen Parva project during construction. If you wish to register your interest to work on the construction of the project, please contact Benjamin Malpass at the Jobcentre Plus by emailing: Benjamin.Malpass@dwp.gov.uk

The Jobcentre Plus office will send you an Expression of Interest form to complete and return. This will enable the Jobcentre Plus team to keep you updated about employment and training opportunities on the Glen Parva site.

Ministry of Justice Prison Operation Update

On 15 February, MoJ/HMPPS launched a mini-competition under the Prison Operator Services Framework to run the new prison at Glen Parva. We expect to announce the outcome of the competition in early 2022.

Sustainability Update

Solar monitors to measure our noise vibration and air quality will be in place on site very soon. This will enable us to ensure that we are not exceeding the limits for noise levels air quality. The photo below shows what these monitors will look like.



Glen Parva Prison Project Newsletter

Green Award for Youth Council – article from Blaby District Council

Four members of the Blaby District Youth Council have earned a Silver Industrial Cadet Award for their continuing hard work to the Green Project.

The awards were presented by Lendlease, joint partners with Blaby District Council on the Green Project. Focusing on reducing single use plastics, increasing recycling and creating a better awareness of the environment, the Green Project is a huge achievement for Reuben, Ebony, Evie and Neve, who have given up over 30 hours of their own time on the work.

Their contribution to the new prison at Glen Parva includes changes during the build process and long-term into operational use. Lendlease have already hosted a virtual tour of the Glen Parva site to bring the build to life see what is happening.

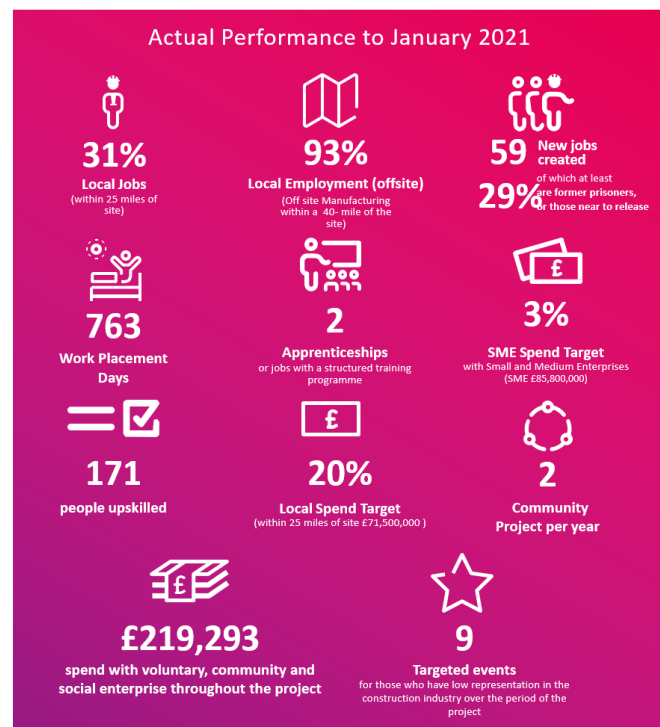
As well as changes to the prison site and building, the Green Project is hoped to introduce changes into the wider community! The Youth Council presented their ideas to the Employment and Skills Steering Group for the prison on 16 February. They have some fantastic ideas which they will be starting to deliver as soon as possible, COVID restrictions allowing.

Community Benefits Progress

From our charts below you will see we have continued to make some great progress with our commitments. We have created 59 new jobs and have provided over 700 days of work placements to people facing challenges to employment. We are working with Blaby District Council and other partners to identify opportunities through the government's new Kickstart programme which provides paid work placements for young people aged 16–24 years.

We have made some significant progress with Voluntary, Community and Social Enterprise Spend. We have some great local initiatives that we are developing with our local partners to engage young people and those facing challenges to securing employment. Our Supply Chain partners attended a workshop with the Project Director and Social Value Manager on Monday 15 February to understand how they can work with Lendlease to help us achieve the maximum social and economic value for local communities.

Glen Parva Prison Project – Key Performance Targets by 2023 vs Actual Performance



Glen Parva Prison Project Newsletter

Sector Based Work Academy

The DWP Jobcentre Plus Leicester team, Leicester College, RMF Freshstart CIC and Lendlease have been working together to deliver a pre-employment training programme that enables participants to gain the skills required by enter the Construction Industry, including Health & Safety and CSCS Training. We are pleased to share that the programme started virtually on Monday 8 February with 10 people taking up the opportunity.

The Minister for Employment, Mims Davies joined the session on Monday to talk to the trainees and ask them how they were progressing. The Minister shared the following message on Twitter later in the day.

The programme has gotten off to a great start with the trainees dealing very well with virtual learning. Trainees completing the programme will have guaranteed interviews for employment opportunities with major construction projects including the new prison at Glen Parva.



The above photographs taken this month show progress on site to date, the image on the left shows the groundworks on the first houseblock and the second is an aerial image of the whole site.

PROJECT CONTACT DETAILS

Social Value lead: Email:

GlenParva@lendlease.com

Ministry of Justice contact:

GlenParvaEnquiries@justice.gov.uk

Website Address: Lendlease.com

Glen Parva Prison Project, Lendlease Site Office: Tigers Road, Glen Parva, Leicester, LE18 4TN

This page is intentionally left blank